

FEM Analysis of Flamelet Wrinkling in a Diffusion Flame

Y. Li¹, T. C. Lieuwen², J. Zhou¹, H. Cao¹

¹Zhengzhou University, Zhengzhou City, Henan Province, China

²Georgia Institute of Technology, Atlanta, GA

Abstract

One can hardly get the exact analytic solution of a full time-dependent convection-diffusion equation, for describing the dynamics of a non-premixed flamelet. The analytic solution of the linearized form with such a model was studied by MATLAB®. And also, a numerical computation was made with the linearization model by COMSOL Multiphysics® software, to provide a perfect accordance with the analytical solution. As well as giving a validation to the linearization flamelet model, the results reveal the characteristics of the flamelet positions and wrinkling originated from a harmonic disturbance on the velocity of reactants at the inlet. It is shown that the more closer to the two ends of the flame, the larger are the amplitudes of the wrinkling. The mixture fraction along the axial of the flame damps generally in an exponential law. The paper would provide principal data for deeply understanding with the thermo-acoustic instabilities of non-premixed combustion.

Reference

- [1] 唐豪杰, 高原, 朱民. 混火焰 函 的 量 分析. 工程 物理 , 2011, 32(1): 173-176.
- [2] 葛 , 臧述升, 郭培卿, 田寅申. N₂稀 旋流合成 非 混燃 特性的影 . 工程 物理 , 2012, 33(9): 1623-1626.
- [3] 李 , 魏小林, 覃建果. 非 等 子 甲 散火焰影 的 究. 工程 物理 , 2013, 34(3): 572-575.
- [4] 曹 , 强, 林文 . 基于大 模 的湍流非 混燃 混合分 率密度函 . 大 (自然科 版), 2012, 52(7): 1018-1022.
- [5] 科, 明 , 坤, 樊建人. 基于 全增厚火焰模型 甲 /空 非 混燃 的大 模 . 工程 物理 , 2012, 33(10): 1823-1826.
- [6] 姚兆普, 朱民. 非 混火焰 斑 生和演化的理 算. 推 技 , 2012, 33(4): 530-535.
- [7] 何博, 万 , 凌宇. 流非 混燃 的火焰面模型理 及 究. 技 , 2012, (3): 17-24.
- [8] 峰, 黛 , 春林, 山下博史. 微尺度 散火焰特性的 解析. 工程 物理 , 2005, 26(5): 883-886.
- [9] M. Fleifil, A.M. Annaswamy, Z.A. Ghoneim, A.F. Ghoneim, Response of a laminar premixed flame to flow oscillations: A kinematic model and thermoacoustic instability results. Combustion and flame, 1996. 106: p. 487-510.
- [10] H.Y. Wang, C.K. Law, T. Lieuwen, Linear Response of Stretch-affected Premixed Flames to Flow Oscillations. Combustion and flame, 2009: p. 889-895.
- [11] M. Tyagi, N. Jamadar, S. Chakravarthy, Oscillatory response of an idealized two-dimensional diffusion flame: Analytical and numerical study. Combustion and flame, 2007. 149(3): p. 271-285.
- [12] K. Balasubramanian, R. Sujith, Nonlinear response of diffusion flames to uniform velocity disturbances. Combustion science and technology, 2008. 180(1-3): p. 418-436.
- [13] Magina, N., Acharya, V., Lieuwen, T. "Response of non-premixed flames to bulk flow perturbations", Proceedings of the Combustion Institute, 2012.

Figures used in the abstract

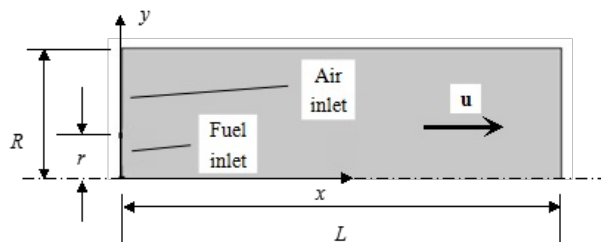


Figure 1: Geometry of the Combustor.

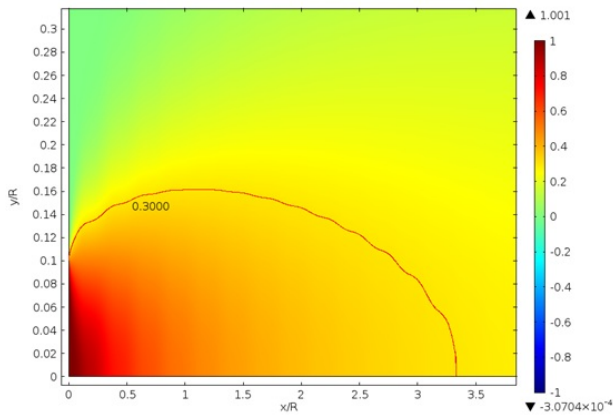


Figure 2: Wrinkling of the Flamelet.

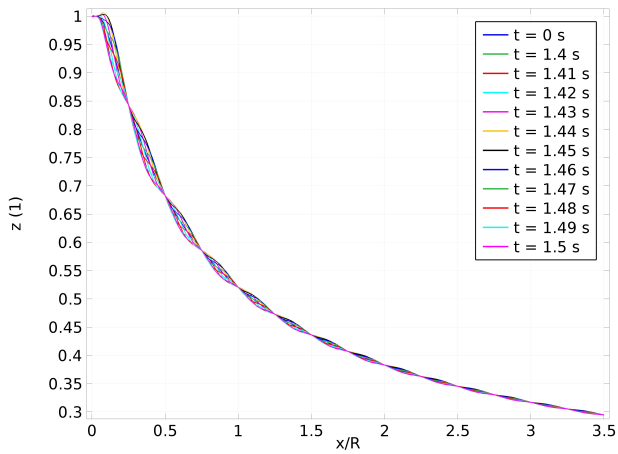


Figure 3: Time-dependent Variation of the Mixture Fraction along the Flame Axial.

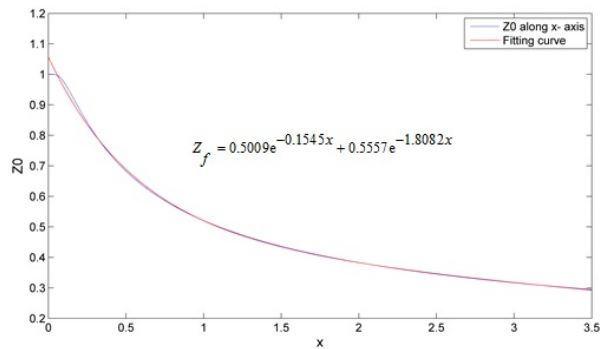


Figure 4: Exponential Fitting of the Steady-state Mixture Fraction along the Flame Axial.